

MY HOME 
Bhooja
A LIFE ABOVE



A passionate offering from My Home Group



From the Chairman's Desk

It gives me great pleasure to introduce you to our most prestigious offering yet – My Home Bhooja. The signature project has been conceived for the global achiever seeking the ultimate in luxury and comfort and stands as a testimony to My Home's commitment of taking quality of life to even greater heights. Welcome to a whole new experience.

~ Dr. Jupally Rameswar Rao





A Life Above

My Home Bhooja is for that uncompromising class of people who associate with luxury living. At My Home Bhooja, the level of opulence moves 36 floors above the ordinary! Spread across 17.8 acres, in Hyderabad's happening Hitec City makes it a coveted property. Our iconic towers don't just breathe luxury, but also boast of a magnificent view of the Bio-diversity Park on one side, and the twinkling cityscape on the other.





Luxury, 36 Floors Higher

One of the tallest residential towers in all of Hyderabad, this luxe livespace of 36 floors is your abode in the clouds. Get a 360 degree view of your success from spacious apartments that stretch between 2,595 Sq.ft and 6,675 Sq.ft.. Experience a luxury that is sustainable and revolves around green living here.





Indian Green Building Council

The Luxury of Sustainability

IGBC Green Homes Pre-certified Platinum rated Project

Ample parking for residents and visitors with provision of electric charging

Water smart low flow plumbing fixtures.
Reusing treated water for flushing, irrigation & cooling towers of air-conditioning

Ample landscape with gardens for children and residents and native species
-increasing bio-diversity

Effective Irrigation system & Water treatment system

Energy saving appliances and equipment
- BEE rated appliances/equipment

Energy saving over the baseline of IGBC Green Home Norms

Ample daylight, ventilation & cross ventilation

Use of low VOC material

Onsite renewable energy

Zero-water discharge

Centralised water chilled energy saving air-conditioning system with individual
room controls

Thermal storage back up for air-conditioning during power failure

LED lighting in common areas

High-speed energy saving elevators

Rainwater storage & harvesting system







Features

- Centralised air-conditioning
- 10'6" Floor-to-floor height
- Imported marble flooring
- Fibre-to-the-home technology
- 100% Power backup
- World-class sanitary fittings







Club Luxe

The Mega Clubhouse 78,000 sq.ft.
Where Luxury is the focal point

The most sought-after address in Hyderabad finds its central hub at Club Luxe, the 78,000 sq.ft. clubhouse that transports you to the next level of luxury. The world-class amenities are perfectly complemented by the elegant design. As a centre, it provides every person and community residing at My Home Bhooja a place to meet, and indulge in its passion!



Amenities at Club Luxe

Grand lobby at each floor with waiting spaces
Multipurpose halls
Indoor shuttle courts
Squash courts
Indoor games
Crèche
Grocery space
Community Health centre
Food courts/Restaurant/Coffee shop
Guest Suites
Swimming pool
Library
ATM
State-of-the-art Gym
Spa/Saloon
Mini Preview theatre
Terrace gardens





Master Plan

LEGEND

1. Entrance & Exit
2. Grand Entrance Lobby(Ground Level)
3. Children's Play Area
4. Jogging Track
5. Drive Way
6. Grand Entrance Plaza(Colonnade Feature)
7. Flower Garden with Fountain Feature
8. Central Courtyard
9. Stepped Arcade
10. Garden Of Peace
11. Butterfly Garden
12. Orchid Plantation
13. Yoga/Meditation Area
14. Cricket Practice Net
15. Tennis Courts
16. Basket Ball Court
17. Swimming Pool
18. Skating Rink
19. Amphitheater
20. Lawn Area
21. Pavilion
22. Gas Banks
23. Club House



TYPICAL FLOOR PLAN
Block - C



KEY PLAN

TYPICAL FLOOR PLAN
Block - B



KEY PLAN



3430 sft
W.F



2595 sft
W.F



2595 sft
W.F



3430 sft
W.F



2680 sft
E.F



4070 sft
E.F



4070 sft
E.F



2680 sft
E.F



KEY PLAN

TYPICAL FLOOR PLAN
Block - E



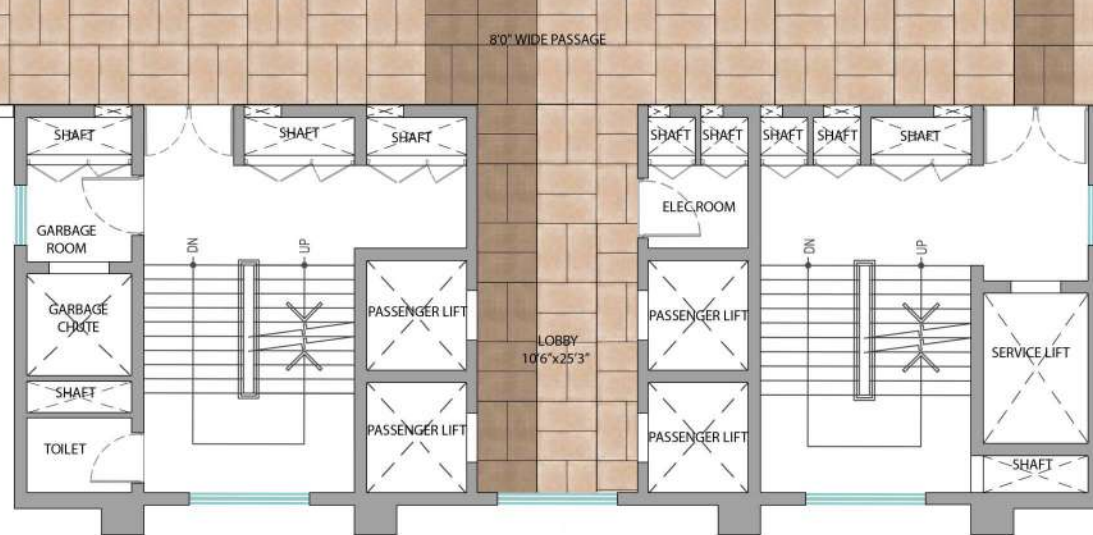
KEY PLAN

TYPICAL FLOOR PLAN
Block - D

**3430 sft
W.F**

**2595 sft
W.F**

**3430 sft
W.F**



TYPICAL FLOOR PLAN
Block - F

**4070 sft
E.F**

**4070 sft
E.F**



TYPICAL FLOOR PLAN
Block - I



KEY PLAN

TYPICAL FLOOR PLAN
Block - H



KEY PLAN





KEY PLAN

TYPICAL FLOOR PLAN
Block - K



KEY PLAN

TYPICAL FLOOR PLAN
Block - J

Specifications

Super structure

R.C.C. framed structure: R.C.C. framed structure to withstand wind & seismic (Zone II) loads
Walls: Reinforced shear walls and/or cement concrete blocks

Doors & Windows

Main door: Teak wood frame with veneered flush shutter, finished with melamine polish and reputed hardware
Internal doors: Hard wood frame with veneered flush shutter, finished with melamine polish and reputed hardware
Toilet/Utility doors: Granite frame with veneered/laminate flush shutter, finished with melamine polish and reputed hardware
Sliding door: UPVC/Bronze anodised aluminium alloy door frame with clear float glass panelled sliding shutters, and hardware of reputed make
Windows: UPVC/Bronze anodised aluminium alloy window system with clear float glass and suitable finishes as per design, and mosquito mesh track
Grills: Aesthetically-designed Mild Steel (MS) grills with enamel paint finish

Wall finishes

External: Textured/Smooth finish with two coats of exterior emulsion paint of reputed make
Internal: Smooth putty finish with two coats of premium acrylic emulsion paint of reputed make, over a coat of primer

Ceiling finishes

Drawing, dining, living, bedrooms, and kitchen: Plain gypsum board false ceiling
Toilet/Utility: Grid ceiling to cover service lines



*Actual Photograph of Model Flat at Site

Flooring

Blocks B to F:
Drawing, living, and dining: Imported marble flooring
Bedrooms, multipurpose and kitchen: 1200x600 mm Polished glazed vitrified tiles of reputed make
Blocks G to K:
Drawing, living, dining, bedrooms, multipurpose and kitchen: Imported marble flooring
Bathrooms: Glazed vitrified tiles of reputed make
Staircases: Natural stone
Corridors: Glazed vitrified tiles of reputed make
Balconies: Glazed vitrified tiles of reputed make (wooden finish)
Utilities: Ceramic/vitrified tiles of reputed make

Tile cladding/Dadoing

Kitchen: Polished glazed vitrified tiles (PGVT) of reputed make up to 2 feet height above kitchen platform.
Bathrooms: Dado up to lintel height using glazed ceramic/vitrified tile of reputed make
Utilities: Ceramic tiles dado up to 5' height

Kitchen:

Granite platform with stainless steel sink.
Piped LPG gas connection with gas meter.
Provision for water purifier.

Bathrooms:

Counter top washbasin (vanity type) with single lever mixer
EWC with flush valve of Villeroy & Boch
Single-lever wall mixer with bath spout and shower of premium brand
Provision for geyser in all bathrooms
Chrome-plated faucets of premium brand

Electrical:

Concealed copper wiring of premium brand
Power outlets for geysers in all bathrooms
Power plugs for cooking range and appliances (chimney, refrigerator, microwave oven, mixers/grinders, geyser, and water purifier) in kitchen.
Power outlets for washing machine & dishwasher in utility area
Three-phase supply for each unit, with individual prepaid meter
Miniature Circuit Breakers (MCB) of premium brand for distribution boards
Modular switches of reputed make
Power back up: 100% DG set back up, with acoustic enclosure and AMF

Centralised air conditioning:

Centralised air conditioning with water cooled chillers of reputed make
FCU/Cassettes in each room, with individual remotes
Pre-paid BTU meters for each unit, for individual consumption metering
Two-hour power back up for air-conditioning through thermal storage

Telecom:

Telephone points in drawing and master bedroom
Intercom facility for all apartments

Cable TV:

Provision for Cable TV connection in drawing, Living and all bedrooms

Internet:

Wi-Fi internet provision for all apartments

Lifts:

High-speed automatic passenger lifts with rescue device and V3F for energy efficiency
Granite/marble cladding entrance
One service lift, with V3F for energy efficiency, for each tower

WTP & STP:

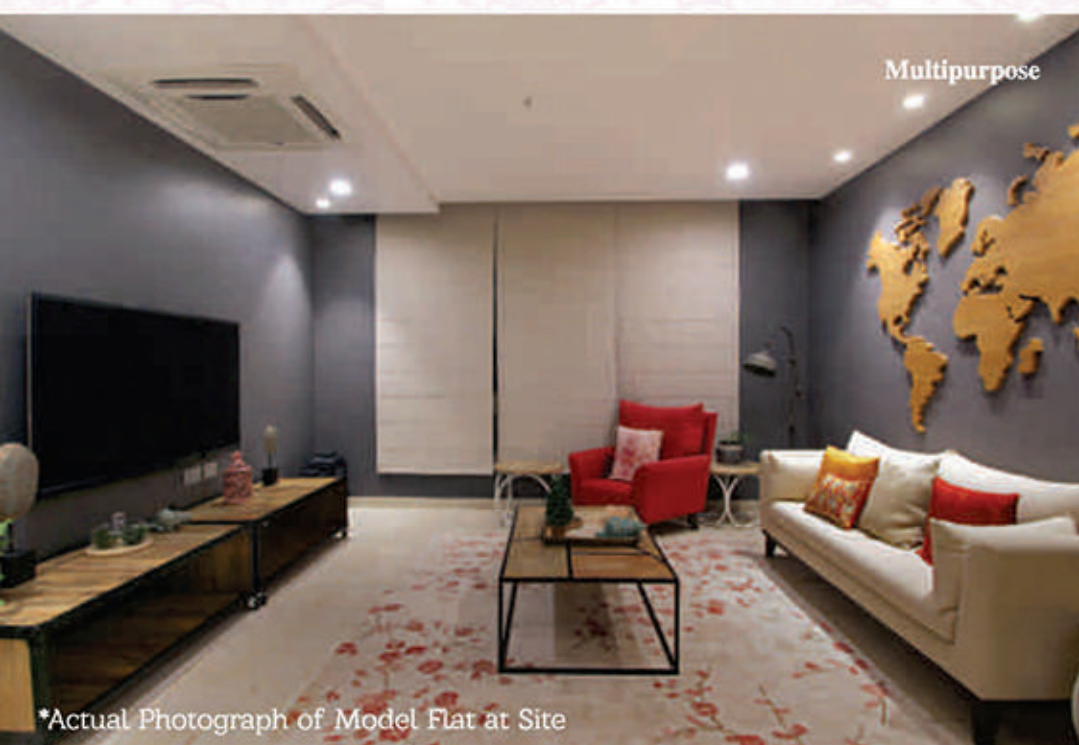
Treated water made available through an exclusive water softening and purification plant (in case of bore water), with water meters for each unit
Sewage Treatment Plant of adequate capacity (as per norms) to be provided; treated sewage water to be used for landscaping/ flushing purpose/cooling towers

Security/BMS:

Round-the-clock security system
Panic button and intercom facility provided in lifts connected to security
Comprehensive security system with cameras at necessary locations
Parking management: Intelligently-designed car parks; signage boards and equipment at strategic locations, for the ease of driving

Fire & safety:

Fire hydrant and fire sprinkler system on all floors and in basements
Fire alarms, smoke detectors in all apartments.
Public address system in all floors and parking areas (basements), Control panel at main security



Multipurpose

*Actual Photograph of Model Flat at Site



Master Bedroom

*Actual Photograph of Model Flat at Site



Everything your life needs is here



Location Map
(Not to Scale)



Scan QR code for site navigation






Beyond Landmarks, a Passion

Creating addresses of excellence and redefining the luxury and lifestyles, My Home has always forayed into construction in a big way with a pioneering zeal. Excellence, when put into practice with an endless passion, results in one thing, that is, living spaces.

Come, live your dream.
Discover your home, at My Home.



Aqua Space Developers Private Limited
a subsidiary of My Home Constructions Pvt Ltd.

8th Floor, Block-3, My Home Hub, Madhapur
Hyderabad - 500 081, Telangana
Ph: 040 - 6688 8888, 9770 800 800

■ mktg@myhomeconstructions.com

■ www.myhomeconstructions.com



Disclaimer: All images, specifications, facilities & other details herein are purely indicative in nature for illustrative purpose only and are subject to modification without prior notice.

